

Company: AccuCompany

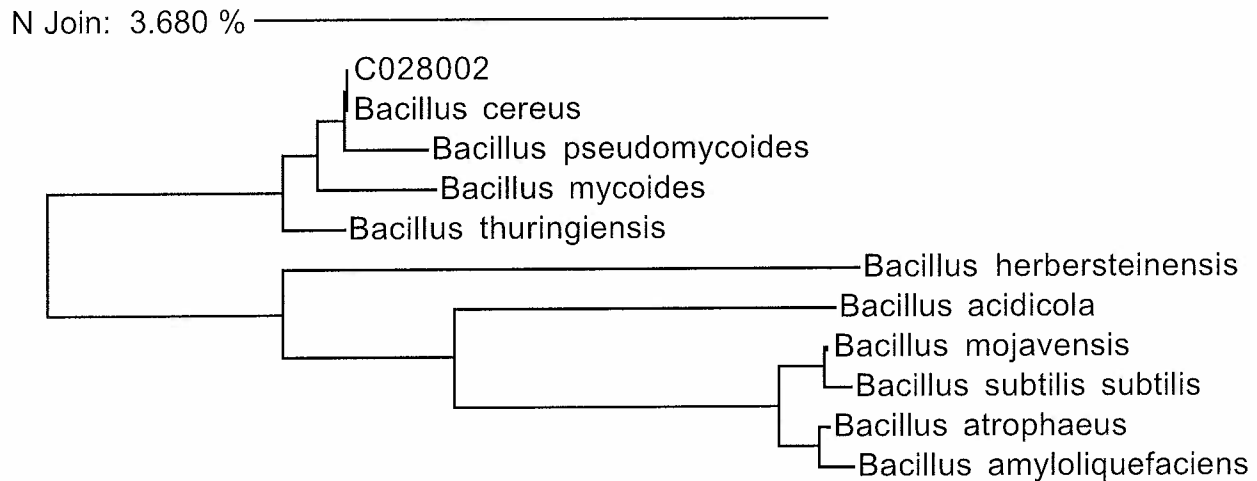
Sample: C028002 - EM040108 Rodac#35

Date: Tuesday, April 8, 2008 9:43 AM

Sequence Alignment

Alignment: 537 C028002
0.00 % 537 Bacillus cereus
0.56 % 537 Bacillus pseudomycoides
0.84 % 537 Bacillus thuringiensis
0.93 % 537 Bacillus mycoides
6.92 % 535 Bacillus atrophaeus
6.98 % 537 Bacillus acidicola
7.10 % 535 Bacillus mojavenensis
7.20 % 535 Bacillus herbersteinensis
7.20 % 535 Bacillus amyloliquefaciens
7.29 % 535 Bacillus subtilis subtilis

Neighbor Joining Tree



Accugenix Database Search Result

Generated by: _____

Identification: Bacillus cereus / mycoides / pseudomycoides / thuringiensis

Reviewed by: _____

Confidence Level: Species*

QA Review: _____

*The Unknown matches to a group of species in the library, which are normally considered to be a group or complex of very closely related species. Current taxonomy does not allow a single name to be assigned to this organism.

Batch #: 80409015

ACC1 - Due 4/9/08

NOT FOR USE IN INVITRO DIAGNOSTICS

SOP-GEN-049
Rev. 01Apr08 JM