

Company: AccuCompany

Sample: C028003 - 80160668 EM sample

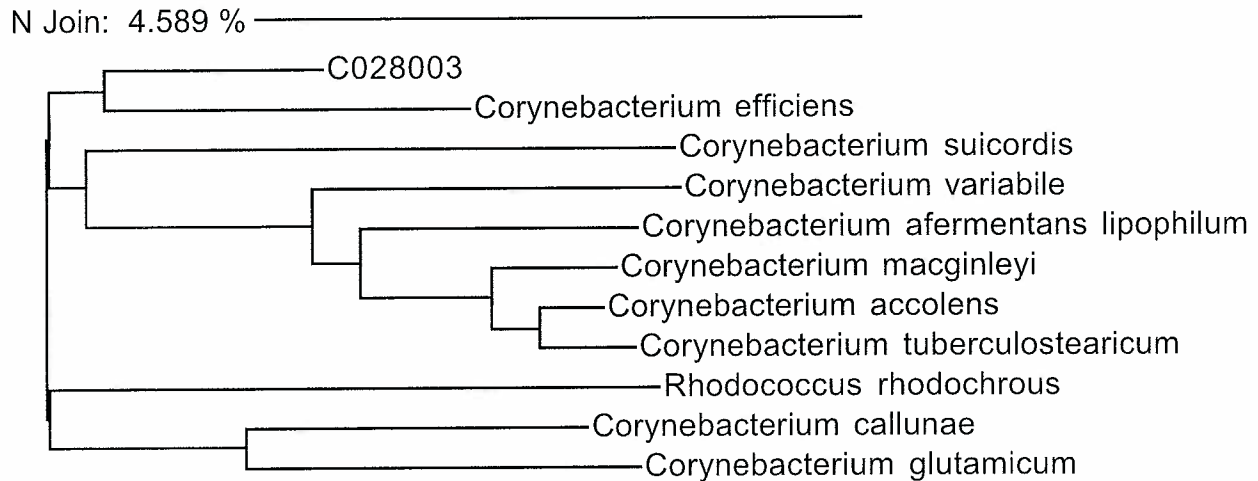
Date: Tuesday, April 8, 2008 9:43 AM

Sequence Alignment

Alignment: 503 C028003

- 4.39 % 501 *Corynebacterium efficiens*
- 5.17 % 507 *Corynebacterium callunae*
- 6.36 % 507 *Corynebacterium glutamicum*
- 6.56 % 507 *Corynebacterium suicordis*
- 6.76 % 503 *Corynebacterium accolens*
- 6.97 % 502 *Corynebacterium macginleyi*
- 6.97 % 502 *Corynebacterium variabile*
- 7.16 % 503 *Corynebacterium tuberculostearicum*
- 7.16 % 503 *Rhodococcus rhodochrous*
- 7.55 % 505 *Corynebacterium afermentans lipophilum*

Neighbor Joining Tree



Accugenix Database Search Result

Generated by: _____

Identification: *Corynebacterium* sp.

Reviewed by: _____

Confidence Level: Genus

QA Review: _____

Batch #: 80415003

ACC1 - Due 4/15/08

NOT FOR USE IN INVITRO DIAGNOSTICS

SOP-GEN-049
Rev. 01Apr08 JM