

Company: AccuCompany

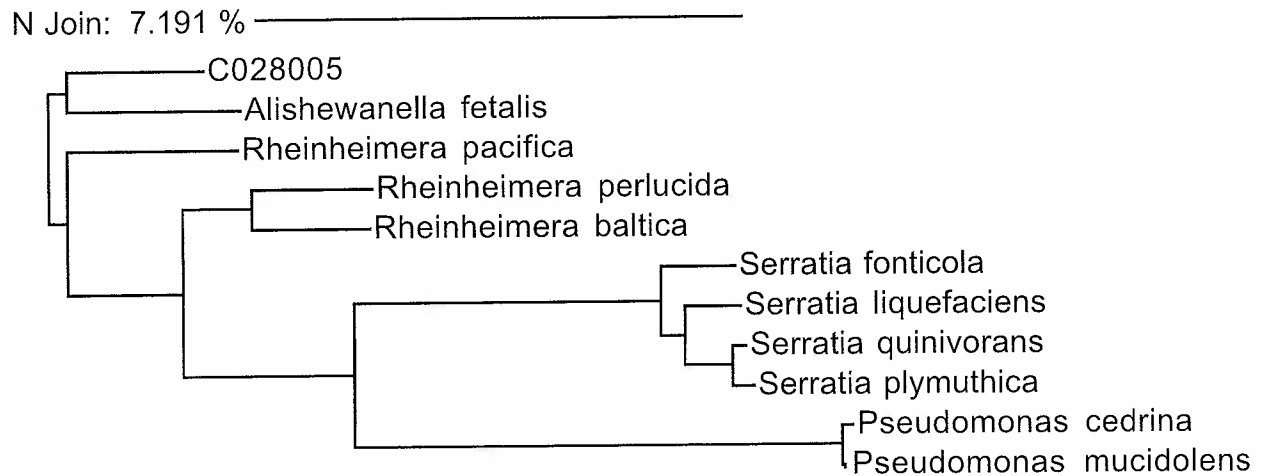
Sample: C028005 - EM Sample cleaning tank # 54321

Date: Tuesday, April 8, 2008 9:43 AM

Sequence Alignment

- Alignment: 510 C028005
- 4.61 % 511 Alishewanella fetalis
 - 5.11 % 509 Rheinheimera pacifica
 - 7.06 % 522 Rheinheimera perlucida
 - 7.65 % 522 Rheinheimera baltica
 - 12.75 % 526 Serratia fonticola
 - 12.94 % 528 Serratia liquefaciens
 - 13.14 % 522 Pseudomonas cedrina
 - 13.14 % 528 Serratia quinivorans
 - 13.24 % 528 Serratia plymuthica
 - 13.33 % 522 Pseudomonas mucidolens

Neighbor Joining Tree



Accugenix Database Search Result

Generated by: _____

Identification: Gammaproteobacteria

Reviewed by: _____

Confidence Level: Class

QA Review: _____

Batch #: 80420006

ACC1 - Due 4/20/08

NOT FOR USE IN INVITRO DIAGNOSTICS

SOP-GEN-049
Rev. 01Apr08 JM