

Company: AccuCompany

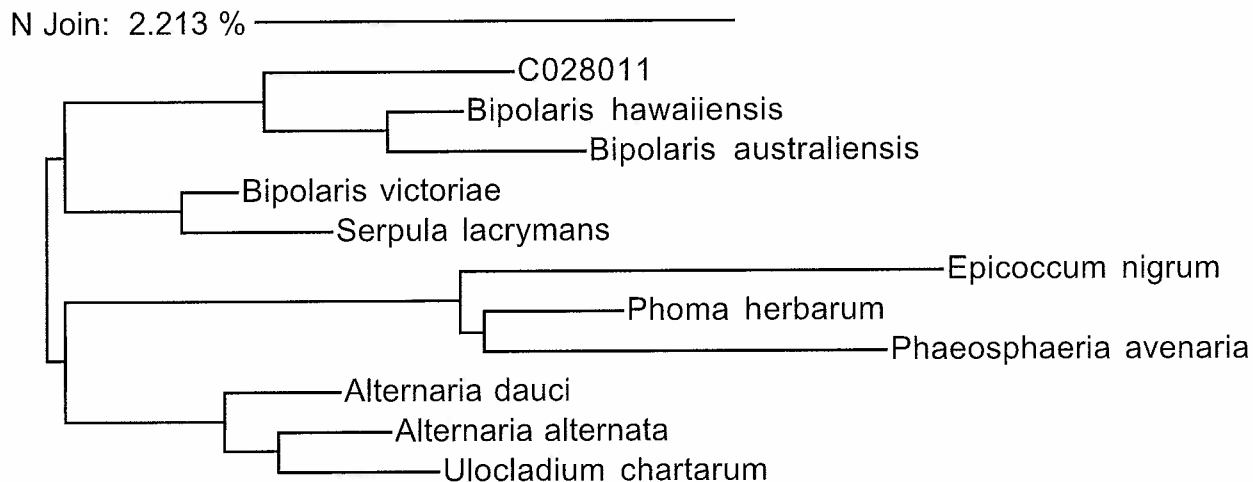
Sample: C028011 - QA-IOP Fungal #2948888

Date: Wednesday, April 9, 2008 5:35 PM

Sequence Alignment

- Alignment: 322 C028011
- 2.17 % 322 *Bipolaris hawaiiensis*
 - 2.48 % 322 *Bipolaris australiensis*
 - 3.11 % 322 *Bipolaris victoriae*
 - 3.42 % 323 *Alternaria dauci*
 - 3.42 % 322 *Serpula lacrymans*
 - 3.73 % 322 *Alternaria alternata*
 - 3.73 % 323 *Ulocladium chartarum*
 - 5.28 % 322 *Phoma herbarum*
 - 5.90 % 322 *Phaeosphaeria avenaria*
 - 6.21 % 322 *Epicoccum nigrum*

Neighbor Joining Tree



Accugenix Database Search Result

Generated by: _____

Identification: *Bipolaris* sp.

Reviewed by: _____

Confidence Level: Genus

QA Review: _____

Batch #: 80416013

ACC1 - Due 4/16/08

NOT FOR USE IN INVITRO DIAGNOSTICS

SOP-GEN-049
Rev. 01Apr08 JM